

# Orange County Alumnae Chapter of Phi Mu Fraternity

Winter 2009 Newsletter

[www.ocphimu.com](http://www.ocphimu.com)

## ORANGE COUNTY PHI MUS GIVE BACK



The philanthropic nature of the Phi Mus of Orange County was evident this past fall. In celebration of Phi Mu's National Philanthropy Day, we hosted our Second

Annual BYOBook event at the Citrus City Grille in Orange, California. In addition to having a wonderful time with each other, we collected over 60 books and DVDs, which were donated to CHOC. Then, in December, our members came together once again in support of CHOC. We gathered together at the home of Co Wilkins-Fey and exchanged holiday cookies, and we also collected gift cards that were distributed to families in need at CHOC for the holiday season. CHOC was very appreciative of our support of the children and their families. Thank you to the following sisters who participated in our philanthropic activities last fall: Maxine Allen, Robyn Russell Anderson, Margaret "Pyonne" Carlberg, Denise Glissman, Lisa Greenberg, Meg Jackson, Debbie Martin James, Linda McLean, Rose Marie Nesbit, Jane Olin, Sandy Rushing, Janae Rubinate, Sheree Simpson, Margie Starks, Kelly Trainer, Marty Vranich, and Co Wilkins-Fey.



*BYOBook at Citrus City Grille*

### THANK YOU TO THE 2008-2009 ORANGE COUNTY DUES PAYING MEMBERS

Maxine Allen (HA)  
Robyn Russell Anderson (HZ)  
Sue Bordner (HA)  
Kelly Bozza (HA)  
Gray Carpenter-Church (HB)  
Jean Conroy (II)  
Denise Glissman (ZI)  
Lisa Greenberg (HZ)  
Meg Jackson (HA)  
Debbie Martin-James (GA)  
Latisha Lorenz (KT)  
Denise McDermott (BH)  
Linda McLean (HZ)  
Rose Marie Nesbit (HA)  
Jane Olin (ZI)  
Sara Penn (AΦ)  
Sandy Rushing (AH)  
Janae Rubinate (ΔE)  
Sheree Simpson (ΔN)  
Marguerite Spitzer (HA)  
Margie Starks (HA)  
Kelly Trainer (AII)  
Darlene Turpin (HE)  
Co Wilkins-Fey (ΔN)

# Upcoming Events... Mark Your Calendars

## SIXTH ANNUAL WHOLE LOTTA LOBSTER FEST

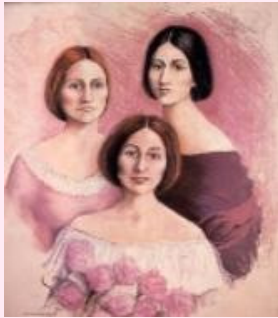


That's right ladies...the Whole Lotta Lobster Fest is back for the sixth time!!  
Please join us at 6:30 p.m. on January 31, 2009 at the home of Pyonne & Dave Carlberg in Huntington Beach for Lobsters, Laughter and Sisterhood.  
Friends and families are welcome to share in the good times!  
For Questions, contact Linda McLean at [ocphimu@yahoo.com](mailto:ocphimu@yahoo.com).

## 157th Annual Phi Mu Founders Day

Join your sisters in celebrating 157 marvelous years of Phi Mu! Our San Diego sisters will be hosting this year in Carlsbad at the Belle Fleur Restaurant at the Carlsbad Outlet Mall.

Invitations will be sent out in the near future, and we'll be arranging carpools from Orange County, but here are a few of the high points for now:



**Saturday, March 7, 2009**  
Registration & Social Hour: 10:30 to 11:30  
Awards and Ritual: 11:30  
Luncheon: 12:30

## 4th Annual Phantom Ball



Get out your slippers and pop some popcorn! Our Annual Phantom Ball is back in April 2009. As always, all proceeds will benefit Children's Miracle Network!



## Martinis In May

Join us for some martinis this May!  
Nothing but fun times with your Phi Mu sisters!

**Date:** Tuesday, May 12, 2008

**Where:** King's Fish House  
1521 W. Katella, Orange  
at the Stadium Promenade

**When:** 6:30 p.m.

## 2nd Biennial California Retreat

Keep an eye out for more information about the upcoming California Retreat! It was such a hit in 2007, that it is back again. What is the California Retreat? It's time for all Phi Mu Sisters from all over California to gather together and celebrate how absolutely fantastic we all are!! We are still working on the schedule, programming, and other details...but hold the weekend (or at least part of the weekend) open because this is not something you want to miss!!



**Date:** June 21-23, 2009  
**Location:** Eta Delta House at UCLA  
**More Information:** Contact Robyn at [ocphimu@yahoo.com](mailto:ocphimu@yahoo.com)

## Phi Mu Sisters on the Web!

**We are so high tech now...you can find Phi Mu all over the internet!**

Our newly redesigned OC website...[www.ocphimu.com](http://www.ocphimu.com)

Our OC email address...[ocphimu@yahoo.com](mailto:ocphimu@yahoo.com)

Our OC online photo album...[ocphimu.myphotoalbum.com](http://ocphimu.myphotoalbum.com)

Our Phi Mu social networking site...[bloom.phimu.org](http://bloom.phimu.org)

Our national website...[www.phimu.org](http://www.phimu.org)

Our national online magazine...[www.phimuaglaia.com](http://www.phimuaglaia.com)

Our SoCal Council website...[www.phimusocal.org](http://www.phimusocal.org)

Our Phi Mu Foundation...[www.phimufoundation.org](http://www.phimufoundation.org)

Our Heart to Heart Chapter...[csufresno.phimu.org](http://csufresno.phimu.org)

Also, **any** monetary payment for Orange County (including dues, events, and if you just feel the need to send us money one day) can be submitted electronically at [www.paypal.com](http://www.paypal.com) ~ just send it to our email address ([ocphimu@yahoo.com](mailto:ocphimu@yahoo.com)).

## Your Orange County Officers

| <b>POSITION</b>        | <b>OFFICER</b>         | <b>CHAPTER</b> |
|------------------------|------------------------|----------------|
| President              | Robyn Russell Anderson | Eta Zeta       |
| Vice-President         | Linda McLean           | Eta Zeta       |
| Secretary              | Janae Rubinate         | Delta Epsilon  |
| Treasurer              | Co Wilkins-Fey         | Delta Nu       |
| Philanthropy           | Kelly Trainer          | Alpha Pi       |
| Membership             | Lisa Greenberg         | Eta Zeta       |
| Collegiate Relations   | Robyn Russell Anderson | Eta Zeta       |
| References             | Denise Glissman        | Zeta Gamma     |
| Panhellenic Delegate   | Kelly Trainer          | Alpha Pi       |
| SoCal Council Delegate | Lisa Greenberg         | Eta Zeta       |

## Upcoming OC Planning Dinner Meetings

*All are invited to attend our planning meetings, which are casual dinner/business meetings, held at a sister's home.*

| <b>DATE</b>      | <b>HOSTESS</b> | <b>CITY</b> |
|------------------|----------------|-------------|
| January 13, 2009 | Lisa Greenberg | Irvine      |
| March 10, 2009   | Janae Rubinate | Yorba Linda |
| April 28, 2009   | TBD            | TBD         |

# Orange County Phi Mu Directory Information

## Join Our Award-Winning Alumnae Chapter!!!

You are not required to pay dues to update your information with us!  
While we always want you to join the alumnae chapter, we would very much like to have your updated information ~ especially your email address since we cannot mail information for every event!

Name: \_\_\_\_\_  
*First Last Maiden*

Address: \_\_\_\_\_  
*Street City ZIP*

Phone: \_\_\_\_\_ Email: \_\_\_\_\_

University: \_\_\_\_\_ Chapter: \_\_\_\_\_ Initiation Year: \_\_\_\_\_

Birthday: \_\_\_\_\_ Profession: \_\_\_\_\_

Special Skills You Can Offer Phi Mu: \_\_\_\_\_

## 2008-2009 Levels of Giving

\_\_\_\_\_ Phi Mu Lady Membership (\$50) \_\_\_\_\_ Carnation Club Membership (\$45)

\_\_\_\_\_ Rose & White Membership (\$40) \_\_\_\_\_ Friend of Phi Mu Membership (\$35)

All levels of giving includes \$20 National dues. The remainder goes to the Orange County Alumnae, and assists us with operating costs, Panhellenic dues, and So Cal Council dues.

Please make all checks payable to “**Orange County Phi Mu Alumnae Chapter**”

I would like to contribute \$ \_\_\_\_\_ to Children’s Miracle Network (tax deductible).

Include a separate check made payable to “Children’s Miracle Network” and we will forward it to Phi Mu Foundation.

**Please submit dues payment, along with this completed form via PayPal to [ocphimu@yahoo.com](mailto:ocphimu@yahoo.com). If you would prefer to mail your dues and form in, please email us at [ocphimu@yahoo.com](mailto:ocphimu@yahoo.com) for the mailing address.**

**Thank you for your membership in the Orange County Alumnae Chapter and for your support of Phi Mu. We hope your membership will be a fun and rewarding experience.**

**We look forward to seeing you soon!**